

## VOCAL ATHLETES: ELITE VOICE USERS

Optimal physiologic performance is essential for any athlete to perform at a professional level. Vocal athletes must also train towards optimal vocal output by training the vocal mechanism for:

- STRENGTH
- STAMINA
- FLEXIBILITY
- AGILITY
- ARTISTRY



Catherine L. Ballif, M.A. CCC-SLP  
Voice Pathologist  
[cballif@dhns.net](mailto:cballif@dhns.net)

Stephen Gorman, Ph.D. CCC-SLP  
Voice Pathologist  
[sgorman@dhns.net](mailto:sgorman@dhns.net)

Lisa N. Kelchner, Ph.D. CCC-SLP, BRS-S  
Voice Pathologist  
Board Recognized in Swallowing & Swallowing Disorders  
[kelchnl@email.uc.edu](mailto:kelchnl@email.uc.edu)

Wendy D. LeBorgne, Ph.D. CCC-SLP  
Voice Pathologist & Singing Voice Specialist  
[wleborgne@dhns.net](mailto:wleborgne@dhns.net)

Jennifer R. Rettig, M.S. CCC-SLP  
Voice Pathologist  
[jrettig@dhns.net](mailto:jrettig@dhns.net)

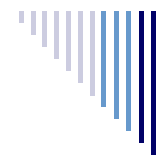
Nancy Dickinson, RHIT  
Registered Health Information Technologist



**THE BLAINE BLOCK INSTITUTE FOR  
VOICE ANALYSIS AND REHABILITATION**

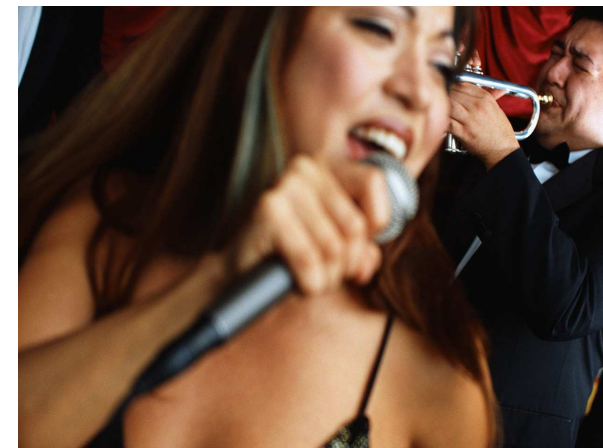
369 West First Street  
Suite #408  
Dayton, OH 45402

Phone: 937-496-2622  
Fax: 937-496-2614



**THE BLAINE BLOCK  
INSTITUTE FOR VOICE  
ANALYSIS AND  
REHABILITATION**

## *SPECIAL CONSIDERATIONS FOR VOCAL ATHLETES*

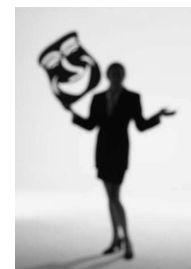


Catherine L. Ballif, M.A. CCC-SLP  
Stephen Gorman, Ph.D. CCC-SLP  
Lisa N. Kelchner, Ph.D. CCC-SLP, BRS-S  
Wendy D. LeBorgne, Ph.D. CCC-SLP  
Jennifer R. Rettig, M.S. CCC-SLP

<http://www.bbivar.com>



# MAXIMUM PERFORMANCE WITH MINIMUM RISK



## PRACTICE GOOD VOCAL HEALTH HABITS

- ◆ Drink at least 64 ounces of water each day
- ◆ Using steam inhalation from a personal steam inhaler may help to alleviate excessive dryness or thick phlegm
- ◆ Cool mist vaporizers or warm-air humidifiers provide additional moisture in a dry environment
- ◆ Avoid cough drops with menthol, as they may be drying to the throat. Instead use a piece of sugar-free hard candy or an herbal drop
- ◆ Over the counter (OTC) products are available to thin secretions and increase saliva production. Check with your doctor
- ◆ Medications (prescription, OTC, and holistic) may have drying effects on the laryngeal mucosa. Check with your pharmacist
- ◆ Minimize exposure to chemicals and pyrotechnics
- ◆ Avoid dairy products within several hours of performing as it may increase the viscosity of mucus
- ◆ Eat a healthy, balanced diet
- ◆ Minimize stress
- ◆ Engage in daily physical exercise
- ◆ Train your instrument and practice daily

## VOCAL WARM-UPS

- Physically stretch and exercise daily to promote a healthy body and to maximize the muscular support needed for optimal voicing
- Begin with easy, mid-range vocalizations. Gradually stretch the voice to the top and bottom of the range
- Once the voice has been gently stretched, begin more technically and vocally challenging vocalizes and/or stylistic exercises

## VOCAL COOL-DOWNS

- Gradually stretch the voice from mid-range to the top and bottom
- Physically stretch

## ADDITIONAL TIPS

- Don't sing/speak through a cold or laryngitis
- Don't sing/speak outside of your physiologic range
- Ensure that you do not hold your breath or make sound during weight lifting activities
- Don't sing/speak if it hurts to swallow
- Ensure proper use of amplification

## ELIMINATE PHONOTRAUMATIC BEHAVIORS

- ◆ Avoid yelling, shouting, loud talking, and talking over noise
- ◆ Avoid singing or unnecessary talking in a car, bus, plane or train
- ◆ Do not use a cell phone in noisy environments
- ◆ Eliminate throat clearing and coughing. Use a hard swallow instead
- ◆ Stop using all tobacco products and recreational drugs
- ◆ Avoid chemicals, dust, and other harmful inhalants
- ◆ Never whisper
- ◆ Don't push your voice to its physiological limitations
- ◆ Don't overuse your voice
- ◆ Take "vocal naps" throughout the day. If your voice starts to feel tired, don't push it
- ◆ Avoid blood thinning medications as much as possible (aspirin, ibuprofen, coumadin)